



SCHÖNN
Medizintechnik GmbH

MASTER ALARM PANEL



MASTER ALARM PANEL

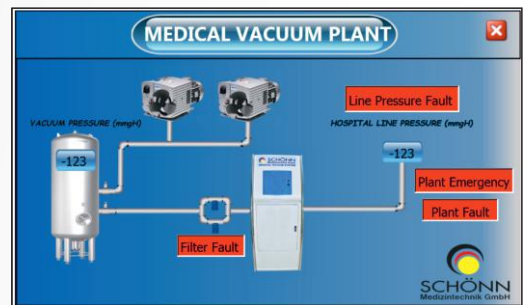
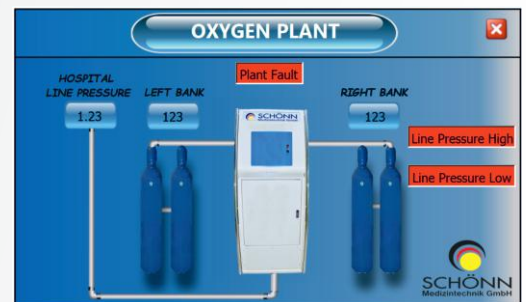
Features

- It allows comprehensive monitoring of all the medical gas plants in the hospital.
- Data of the medical gas plants can be displayed at a central monitoring station. Medical Vacuum Supply System, Medical Air Supply System, Medical Compressed Gas Supply Systems (for O₂, N₂, N₂O, CO₂ and Air Manifolds), LOX Tank Systems, AGSS Systems, O₂ Generating Plants.
- The instantaneous pressure, alarm conditions of all gas plants in the hospital and all the pumps, compressors and cylinders of the gas plants can be monitored from the medical gas plant central alarm panel.
- With Modbus communication system, up to 30 gas plants can be monitored from this panel.
- Alarms can be monitored audio-visual.
- Alarms can be silenced only on the panel; the alarm on the plant will go on.
- Authorized person can access to the detail screen by password.



Main Screen

The alarm values are set according to the HTM standard. When an alarm occurs in the plant, you can check the status of the plant by clicking on the relevant section.



Technical Data

Communication	: 12 V RxTx Comm.Cables
Power Inlet	: 12 V DC (1 pcs)
Power Supply	: 100-240 V (1.52 A) ==> 12-24V (3.2 A)
Comport	: rs485 (Modbus Input) (1pcs)
Ethernet	: RJ45 (1 pcs)
USB	: 2.0 port (1 pcs)

Office

- 📍 Helena Rubinstein Str. No: 4-G 40699 Erkrath/Düsseldorf
- ☎ +49 (0) 211 5203 9751
- 📠 +49 (0) 211 5203 9753

Factory

- 📍 Herforder Strasse 46, 32602 Vlotho/Germany
- ☎ +49 (0) 5733 963 0440
- 📠 +49 (0) 5733 963 0442