

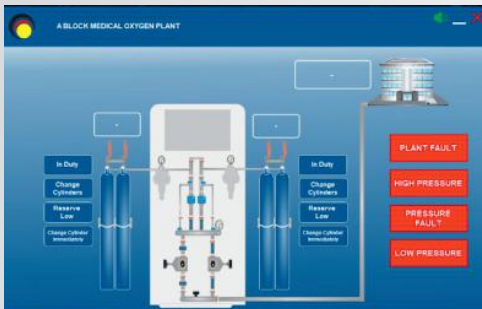
# MEDICAL GAS PLANTS MANAGEMENT SYSTEM



# MEDICAL GAS PLANTS MANAGEMENT SYSTEM

## Features

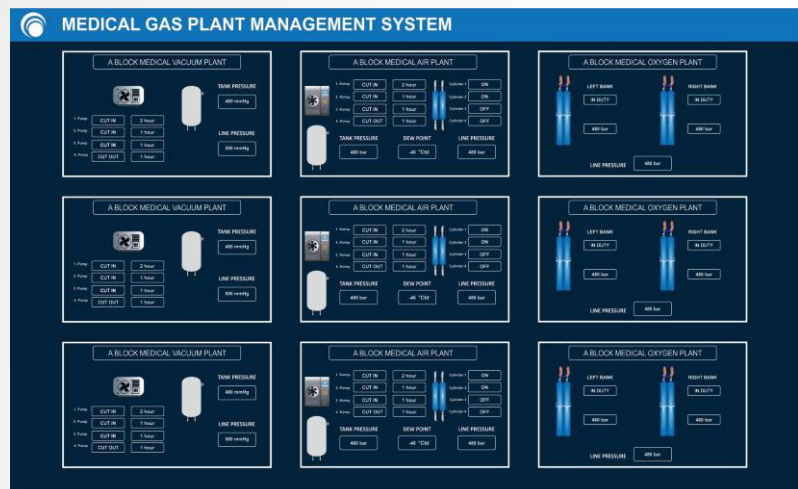
- It allows comprehensive monitoring of all the medical gas plants in the hospital.
- Data of the medical gas plants (medical air plant, medical vacuum plant, AGSS plant, Compressed gas plant ) can be displayed at a central monitoring station.
- The instantaneous pressure, alarm conditions of the gases of all gas plants in the hospital and all the pumps, compressors and cylinders of the gas plants can be monitored from the central computer.
- With this system, the settings of the plants (medical air plant, medical vacuum plant, AGSS plant, Compressed gas plant ) can be set without going to the plants.
- With Modbus communication system, up to 255 gas plants can be monitored and controlled from this system.
- When detailed information necessary, the information of the plant with the fault alarm is opened as a pop-up windows.
- When the alarm is occurs, the pop-up windows automatically open.
- Alarms can be monitored audio-visual.
- Alarms can be silenced remotely for each plant.
- Language selection (German-English)
- Authorized person access by password.



Pop-up



When detailed information necessary, the information of the plant with the fault alarm is opened as a pop-up windows. And when the alarm is occurs, the pop-up windows automatically open.



## Office

Helena Rubinstein Str. No: 4-G 40699 Erkrath/Düsseldorf

+49 (0) 211 5203 9751

+49 (0) 211 5203 9753

## Factory

Herforder Strasse 46, 32602 Vlotho/Germany

+49 (0) 5733 963 0440

+49 (0) 5733 963 0442



info@schoenn.de



www.schoenn.de