



**SCHÖNN**  
Medizintechnik GmbH

# ZONE WALL UNITS



**SCHÖNN**  
Medizintechnik GmbH

8888



HIGH  
NORMAL  
LOW  
FAULT

O2 MAA VAC

**ZONE WALL UNIT**



IN THE CASE OF EMERGENCY  
BREAK THE GLASS CLOSE THE VALVE

**HST200**



**SCHÖNN**  
Medizintechnik GmbH



**ZONE WALL UNIT**



IN THE CASE OF EMERGENCY  
BREAK THE GLASS CLOSE THE VALVE

**C2200**

**ZONE WALL UNIT**



**SCHÖNN**  
Medizintechnik GmbH

04.17



HIGH  
NORMAL  
LOW  
FAULT

O2 MAA VAC

**HST100**

## ZONE WALL UNITS

The SCHÖNN Zone Wall Unit (ZWU) is designed to provide a zone isolation, maintenance system and a physical break point. The ZWU provides additional facilities which enable connection of an emergency gas supply, purging and gas sampling. ZWU's are fitted to all medical gas / vacuum services in a prominent and accessible position at the entry to wards, intensive care units operating rooms etc. to the recommendations of HTM 02-01, C11, EN 737 and ISO EN 7396-1:2007.

The unit has got 2,3,4,5 or 6 Area Valve Service Units and also an Alarm Panel for controlling medical gas services such as Oxygen, Nitrous Oxide, Medical Air 4 Bar, Medical Air 7 Bar, Carbon dioxide and Medical Vacuum.

The Unit includes copper stubs on the top for easy installation.

The Unit is painted with electrostatic powder paint. It has got an aesthetic appearance precise manufacturing, high quality. It collects the valves and its pipes in a limited space. The Unit provides easy access to the valves and pressure sensors.

OXYGEN

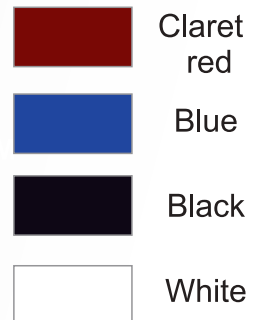
MEDICAL AIR

NITROUS OXIDE

CARBON DIOXIDE

SURGICAL AIR

VACUUM

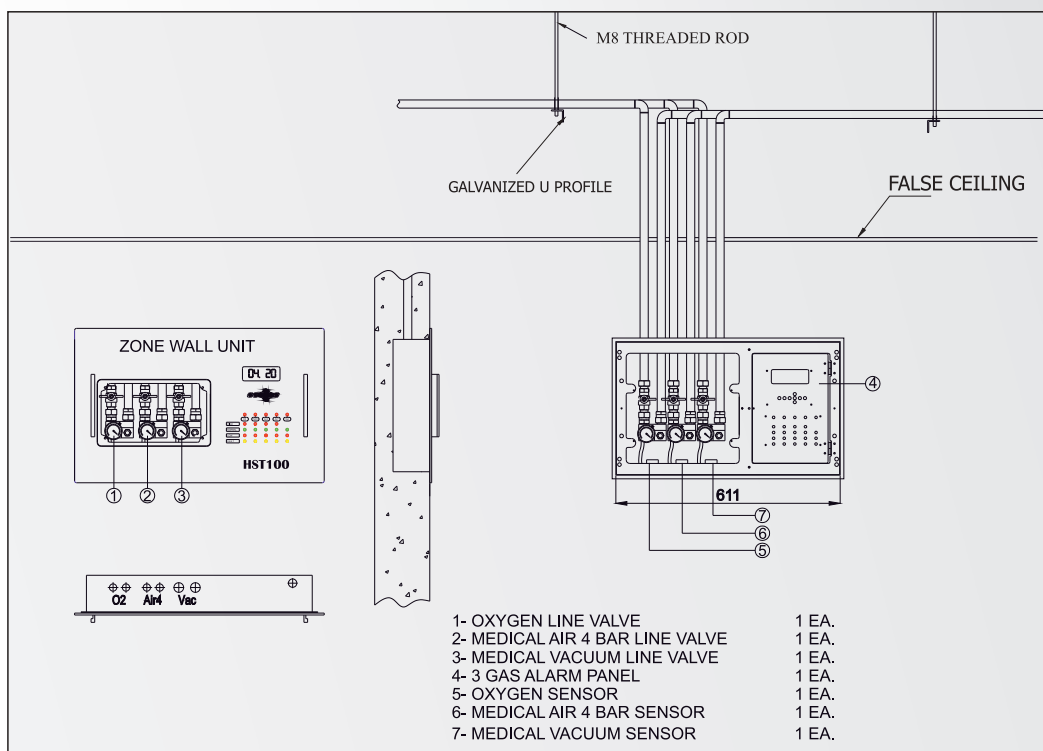


4 different color options

# ZONE WALL UNITS

## General Features

- Meets the requirements of C11, HTM 02-01, EN 737 and ISO 7396-1:2007
- Steel construction giving greater fire retardancy. High quality epoxy powder coating in RAL or BS colour.
- Easy clean surface.
- Internal segregation of valves avoids inadvertent isolation of wrong zone or gas.
- Break glass panel for easy access to valves in emergency situations.
- Each block has the name of the gas passing inside on embossed and indelible.
- Incorporates high quality medical ball valves with detachable adapters.
- 100% leak tightness NIST connections each side of valve fitted as standard.
- Access to the system may be closed and fed with remote supply hose attached to NIST connector.
- Supplied, pre-wired & tested for ease of installation. Unit incorporates local pressure switches and alarms.
- HST Series is controlled by microcontroller and C Series is controlled by computer and all systems supports communication at RS-485 connection mode. Pressure and vacuum sensors are connected to the alarm panel according to the service.
- The alarm panel displays the values received from the sensors.
- In case the pressure values of the gas received trespass the predefined values (in memory), it will send an audio and visual warning.
- The signals from the alarm panels can be traced by a computer, authorized by a Network Manager in a computer network system, by adding our software.



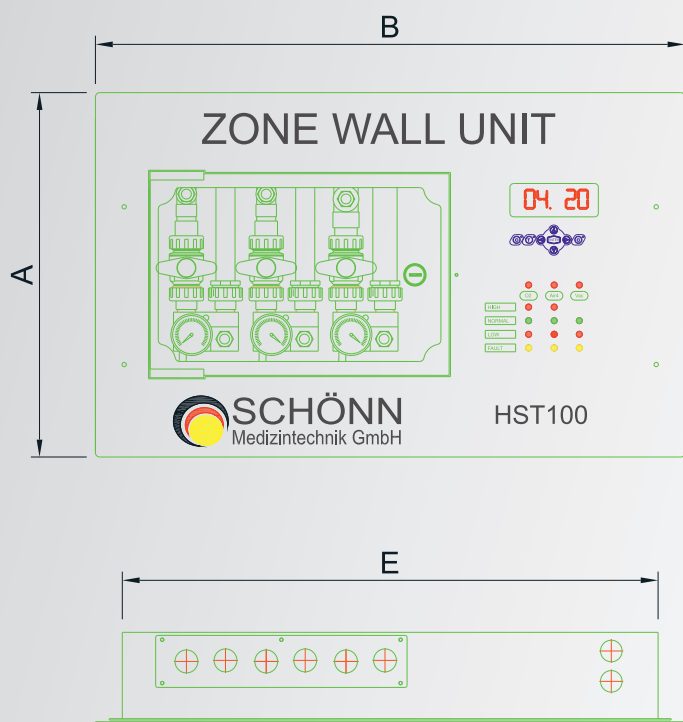
3 Gases ZWU with Alarm Panel

# ZONE WALL UNITS

## HST 100



- The front screen section consists of button group, display, and led lights grouped according to gas groups.
- The information of alarm, current state, test and fault conditions can be visually followed with the help of buttons, display and led lights which is activated by the signals coming from the gases at the pipe lines.
- Any gas signal column is chosen via the button it signifies; the sets for the address, calibration, high and low pressure values can easily be seen and can be set as desired (can be entered in memory). Pressure and vacuum values are digitally displayed on LED display.



NIST Connector

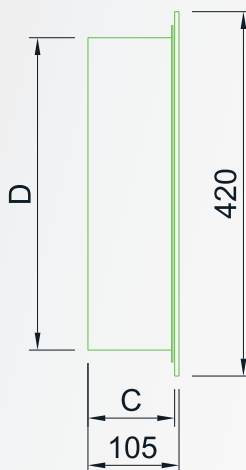
Pressure Gauge



HST 100 Model Zone Wall Unit Inside View



Pressure and Vacuum Sensor



ZONE WALL UNIT MODEL: HST100

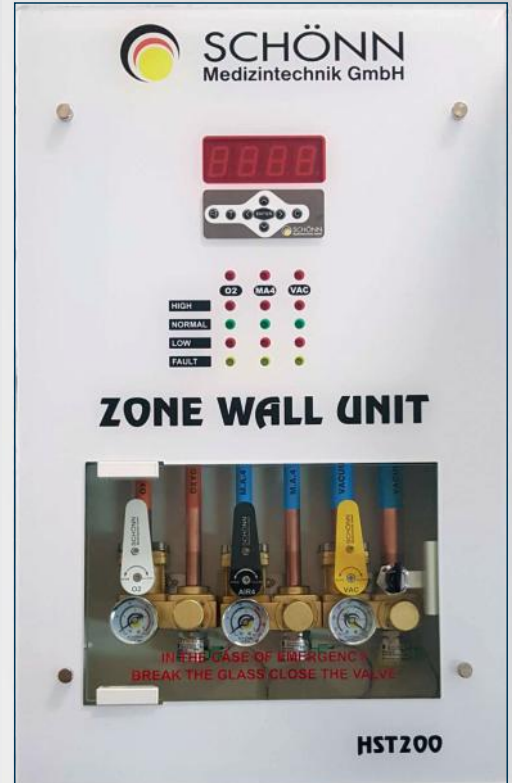
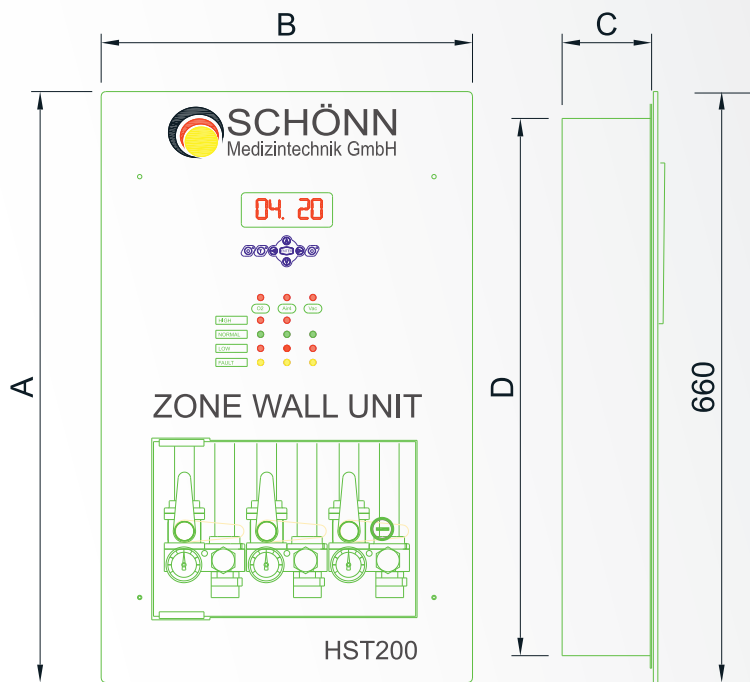
	A	B	C	D	E
1 GAS	420mm	680mm	100mm	360mm	355mm
2 GASES	420mm	680mm	100mm	360mm	355mm
3 GASES	420mm	680mm	100mm	360mm	355mm
4 GASES	420mm	858mm	100mm	360mm	798mm
5 GASES	420mm	858mm	100mm	360mm	798mm
6 GASES	420mm	957mm	100mm	360mm	897mm



# ZONE WALL UNITS

## HST 200

- The front screen section consists of button group, display, and led lights grouped according to gas groups.
- The information of alarm, current state, test and fault conditions can be visually followed with the help of buttons, display and led lights which is activated by the signals coming from the gases at the pipe lines.
- Any gas signal column is chosen via the button it signifies; the sets for the address, calibration, high and low pressure values can easily be seen and can be set as desired (can be entered in memory). Pressure and vacuum values are digitally displayed on LED display.



NIST Connector

Pressure Gauge

Pressure and Vacuum Sensor



HST 200 and C2200 Model Zone Wall Unit Inside View

ZONE WALL UNIT MODEL: HST200

	A	B	C	D	E
1 GAS	660mm	415mm	100mm	600mm	355mm
2 GASES	660mm	415mm	100mm	600mm	355mm
3 GASES	660mm	415mm	100mm	600mm	355mm
4 GASES	660mm	580mm	100mm	600mm	520mm
5 GASES	660mm	580mm	100mm	600mm	520mm
6 GASES	660mm	658mm	100mm	600mm	598mm

# ZONE WALL UNITS

## C2200

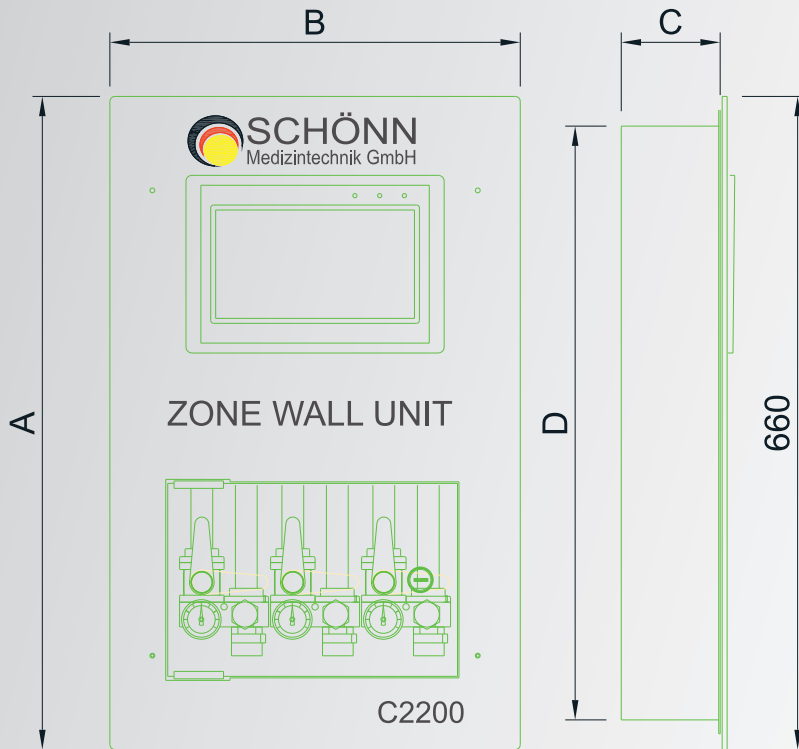
NIST Connector

Pressure Gauge

Pressure and Vacuum Sensor



HST 200 and C2200 Model Zone Wall Unit Inside View



- 10.1" TFT touch screen computerized alarm unit.
- Innovative design offers ease of use to users.
- All gas pressures are instantly displayed on a single screen
- Alarm and calibration settings, hospital name and reporting user's password are displayed.

ZONE WALL UNIT MODEL: C2200

	A	B	C	D	E
1 GAS	660mm	415mm	100mm	600mm	355mm
2 GASES	660mm	415mm	100mm	600mm	355mm
3 GASES	660mm	415mm	100mm	600mm	355mm
4 GASES	660mm	580mm	100mm	600mm	520mm
5 GASES	660mm	580mm	100mm	600mm	520mm
6 GASES	660mm	658mm	100mm	600mm	598mm

### Office

Helena Rubinstein Str. No: 4-G 40699 Erkrath/Düsseldorf

+49 (0) 211 5203 9751

+49 (0) 211 5203 9753

### Factory

Herforder Strasse 46, 32602 Vlotho/Germany

+49 (0) 5733 963 0440

+49 (0) 5733 963 0442